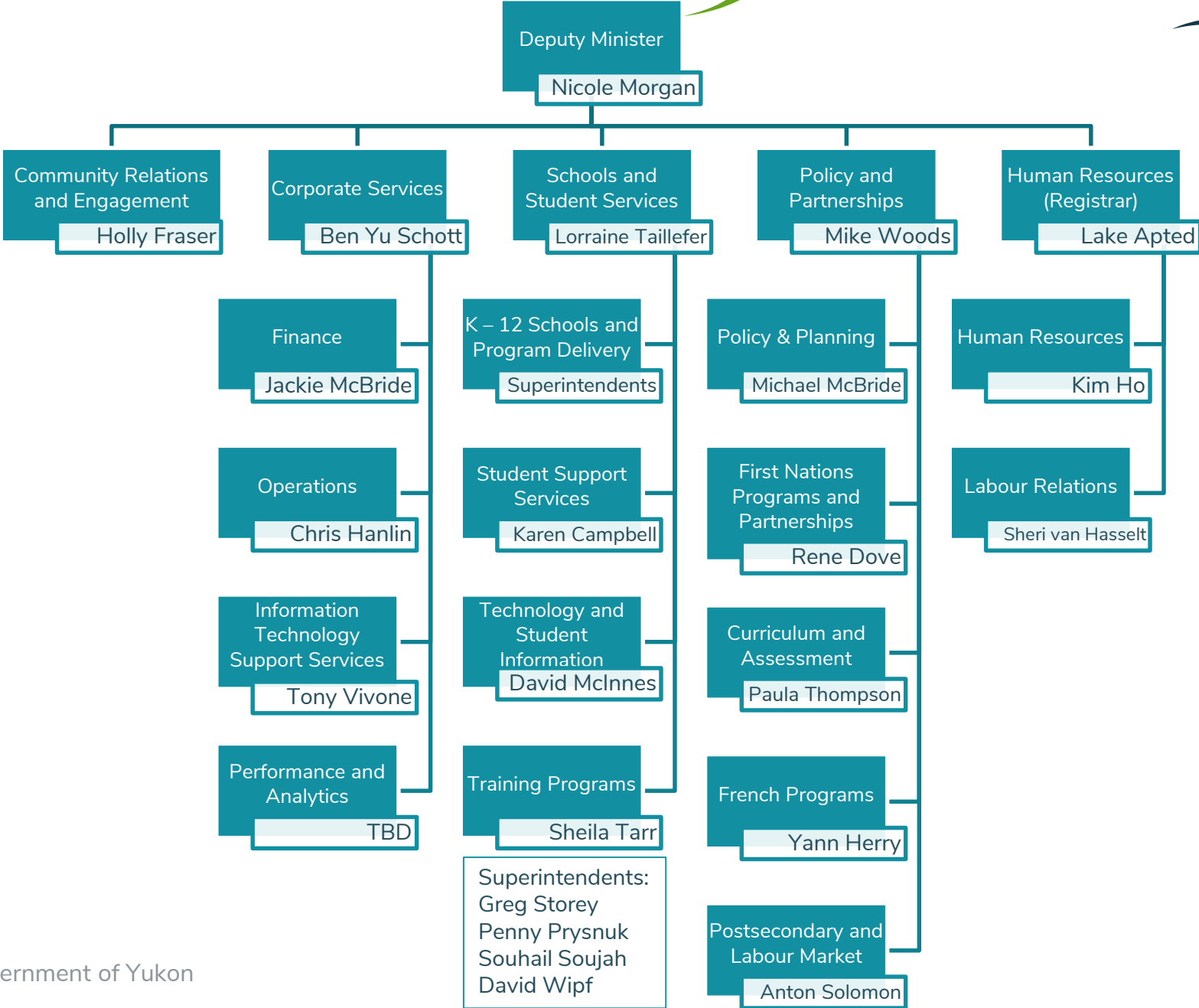


# Department of Education

May 4, 2018



# Reporting structure



# Service structure

## Community Relations and Engagement

Minister's Office support

Communications and public engagement

School Councils support

## Corporate Services

### Finance

- Budgets and accounting
- Risk management
- Procurement

### Operations

- Health and safety
- Facilities and capital planning
- Custodial
- Student Transportation

### Information technology

- School and department IT infrastructure and tech support

### Performance and Analytics

- Research and data

## Schools and Student Services

### K-12 schools

- Delivery of school programs and services
- Student achievement (school growth planning)
- Teacher mentorship and evaluation

### Student supports

- Services for learning needs (support, formal assessments, learning plans, IEPs, etc.)

### Student info & resources

- Aspen, ATIPP and Privacy
- Resource services
- Digital tools/content

### Training programs

- Student financial assistance and employment
- Apprenticeship

## Policy and Partnerships

### Policy and planning

- Planning, policy and legislation
- Records

### First Nations education

- Yukon First Nations education initiatives and curriculum resource development

### French education

- French First partnership
- Second Language policy, standards and resources

### Curriculum and assessment

- curriculum and assessment policy, standards and resource development for K-12

### Post-secondary / labour market

- Labour market policy and standards
- Transition to Yukon University

## Human Resources

Staffing and recruitment

Employee engagement and leadership development

Labour relations

Registrar / Teacher Certification and Qualification